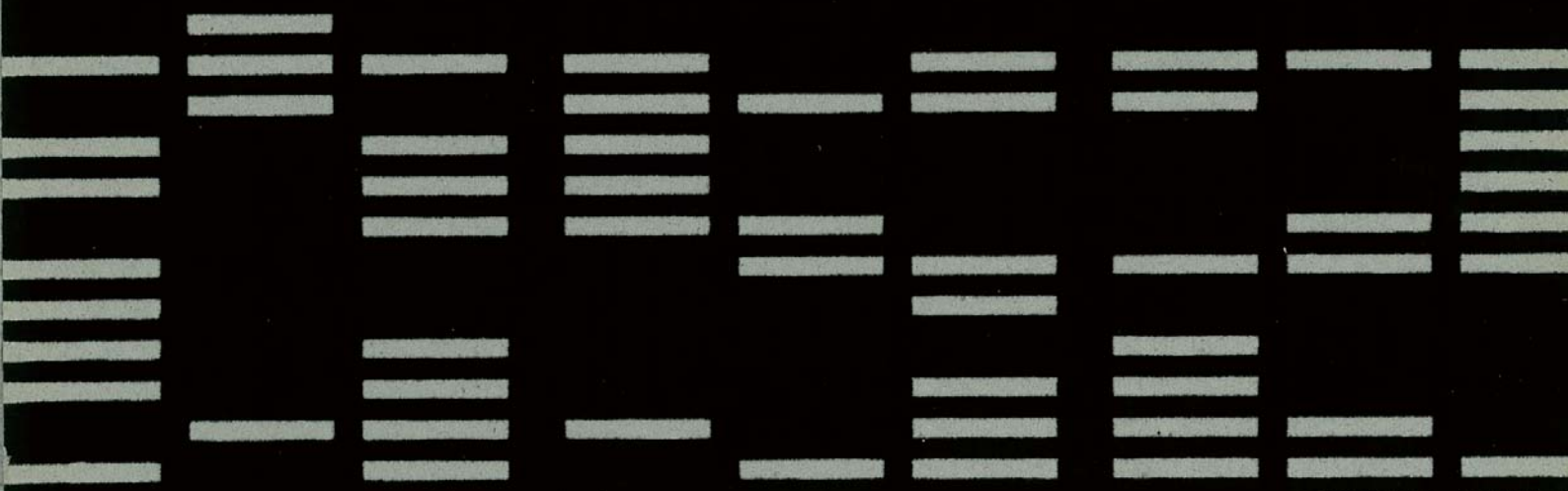


MODERN ARCHITECT- TURE IN THAILAND

001



Bank of Thailand Headquarter

Plan Associates / Plan Architect / Tandem Architect

Location :
Samsen Road, Bangkok

Client :
Bank of Thailand

Area :
86,000 sq.m.

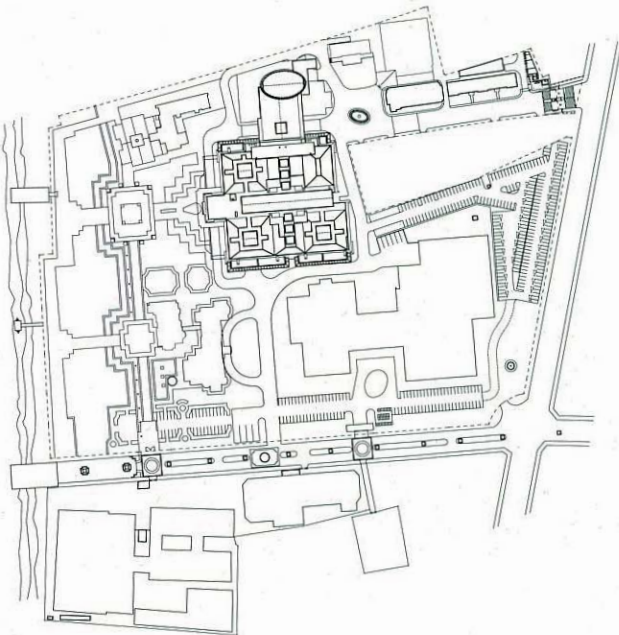
Year :
2002–2007

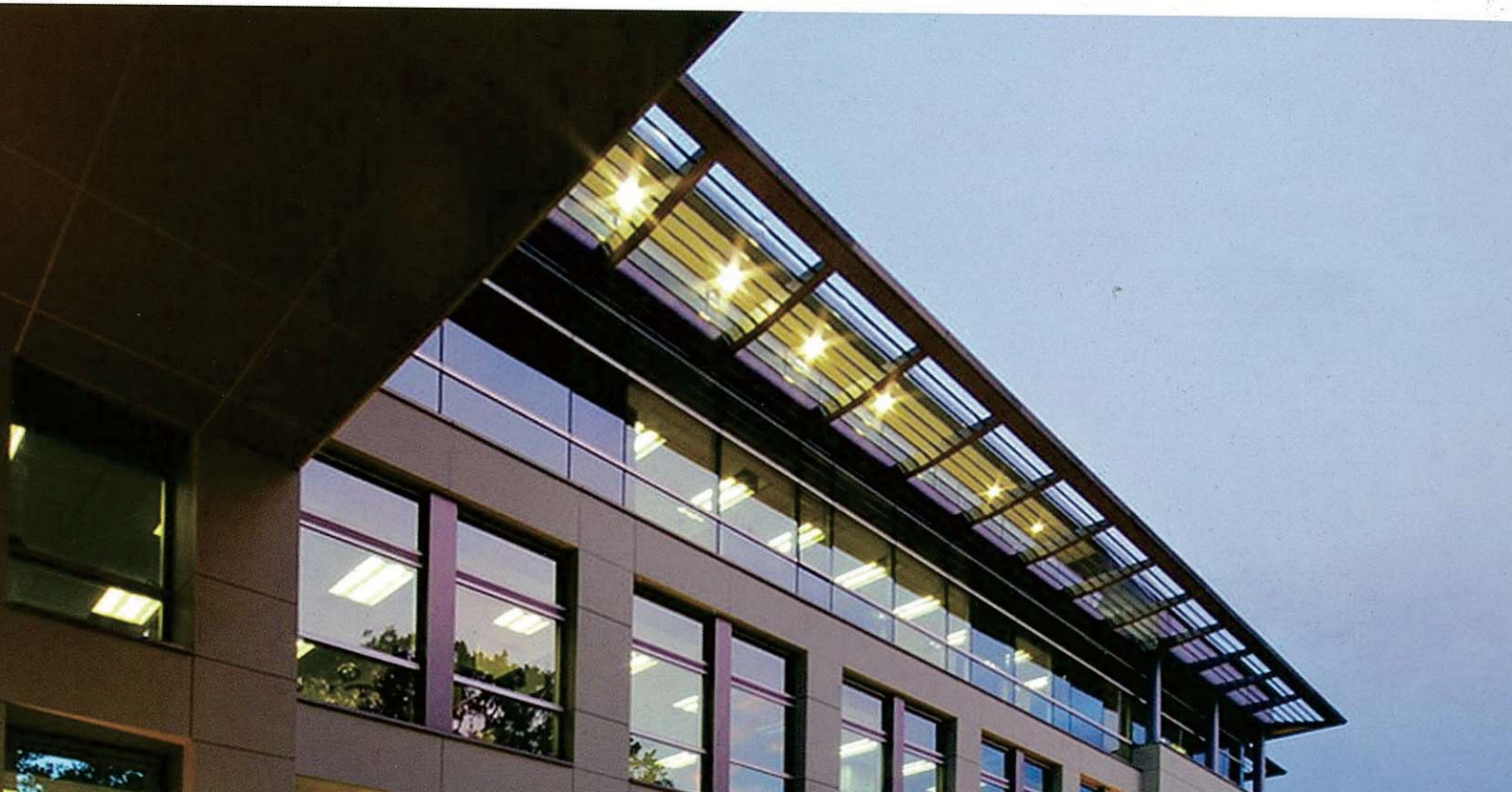
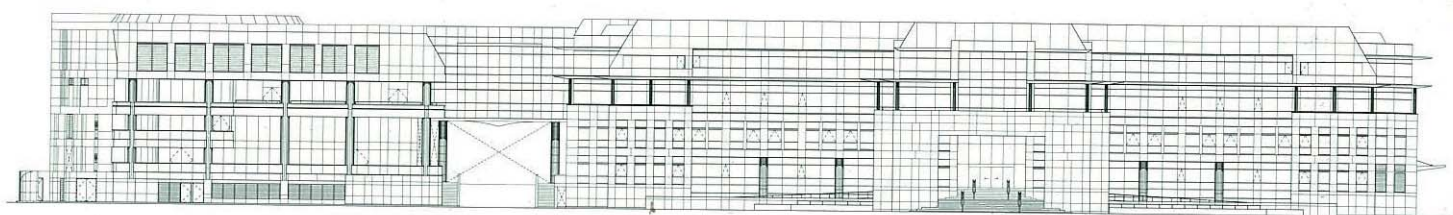
It is essential to understand the Bank of Thailand headquarters' expansion site and its surrounding historical context before appreciating this project. The site was surrounded by several historical buildings such as the Bangkhunprom Palace and Devavesm Palace. Although it was a new construct, the Thai National Bank expansion architecture was designed with respect to its historical surroundings and was blended into the historical context of the site.

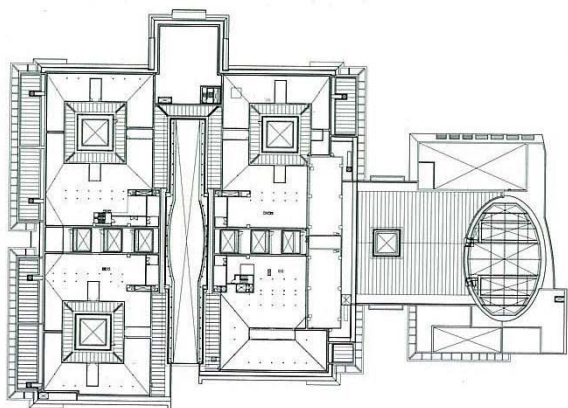
Samsen Road, the main access point to the expansion, was extended for the new building. A new visual axis was created, which influenced the building's positioning. The new visual axis was also expressed by the opening plaza which was used as the main entry to the building.

The headquarters plan required a complicated layer of functionality. Security and functional usage were two of the key issues for the design planning of the new bank. Building zoning was arranged according to its function and usage. The main office was connected to the existing building, while the service and meeting areas were placed next to the office for convenience use.

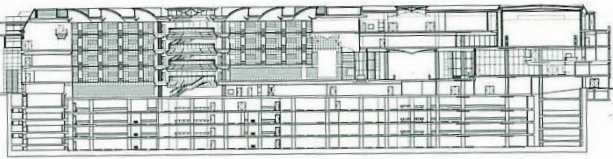
The Bank of Thailand architecture is contemporary, but humble to its surroundings. The use of natural light during the day is incorporated into the design for sustainable energy savings. This project was awarded an Association of Siamese Architect (ASA) 2009 Green Award.







Entrance passage way





Light well details

